

Flexible Automation MACHINE BUILD DIVISION



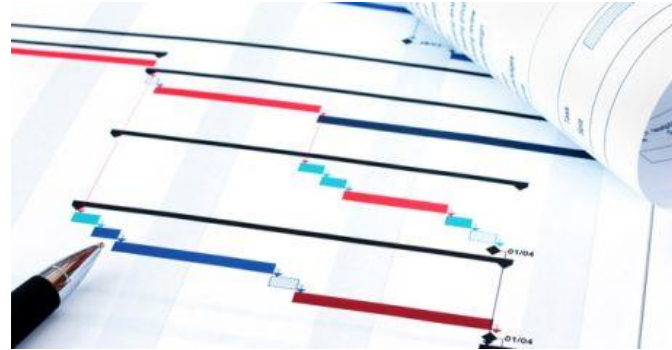
CONFIDENTIAL



In-House Reliability

- Capable and experienced team
 - Mechanical & Electrical Engineering
 - Machining and Fabrication
 - Mechatronic Assembly
 - Controls Programming
 - Project Management

Project Management



- Project Managers

- Engineers with custom automation design and controls experience
- Trained in Project Management and many years of PM experience
- Establish and manage project schedules
- Work with the department managers to assign project teams
- Organize and lead the horizontal project team members
- Communicate project status to the customer and FAI staff
- Make key decisions on projects that may affect profit / loss

CONFIDENTIAL

Mechanical Engineering



- 7 staff members
 - Seasoned machine designers
 - Masters, Bachelor, and Associate degrees
 - Vendor trained
- Target: 15% excess capacity

CONFIDENTIAL



Controls Engineering

- 10 Staff Members
- Expert programmers
- Schematic and documentation specialists
- EE and MEE degrees
- Target 25% over capacity

COGNEX

SIEMENS

KEYENCE

**MITSUBISHI
ELECTRIC**

- 6 PLC lines
- 6 Robotic lines
- 4 Vision lines
- NI LabVIEW Certified Developers

EPSON[®]
EXCEED YOUR VISION



**NATIONAL
INSTRUMENTS**[™]



CONFIDENTIAL

Machining



- 11+ staff members
- Two-shift operation
- MasterCAM on high-speed, tool changing CNCs
- In-house control responds immediately

CONFIDENTIAL

Mechatronics Assembly



- 10 staff members
- In-house panel-build
- Cross-trained technicians



CONFIDENTIAL