

**Flexible  
Automation  
Inc.**



# *Company Overview*



# Automation Solutions

## Robotic Fastening, Dispense and Material Handling



- » Screw Driving
- » Clip Setting
- » Clinching
- » Fasteners



- » Form-In-Place Gaskets
- » Glass Primer Applications
- » Structural Bonding
- » Mold release application

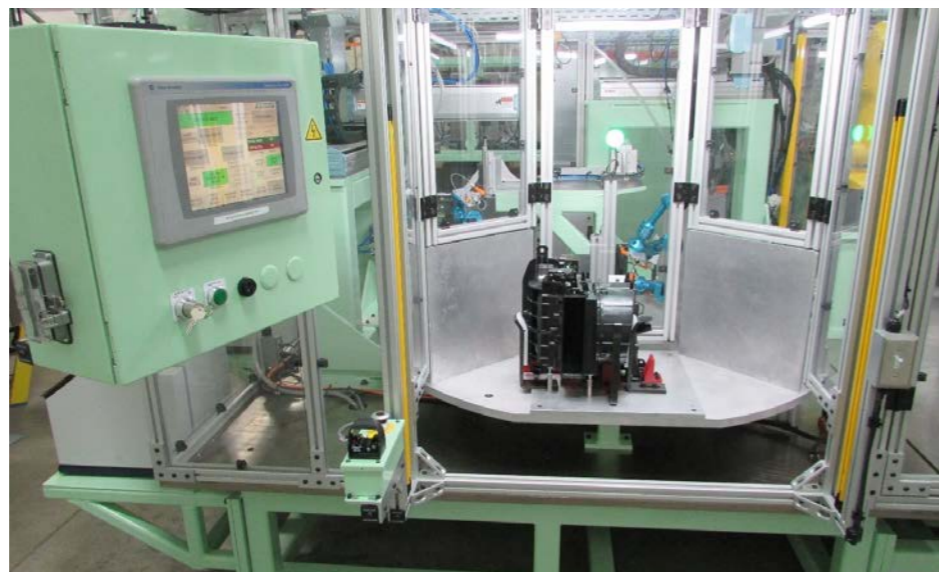


- » Machine Tending
- » Case Packing
- » Palletizing
- » Sorting





# Three Rotary Index Dials (12 Stations)



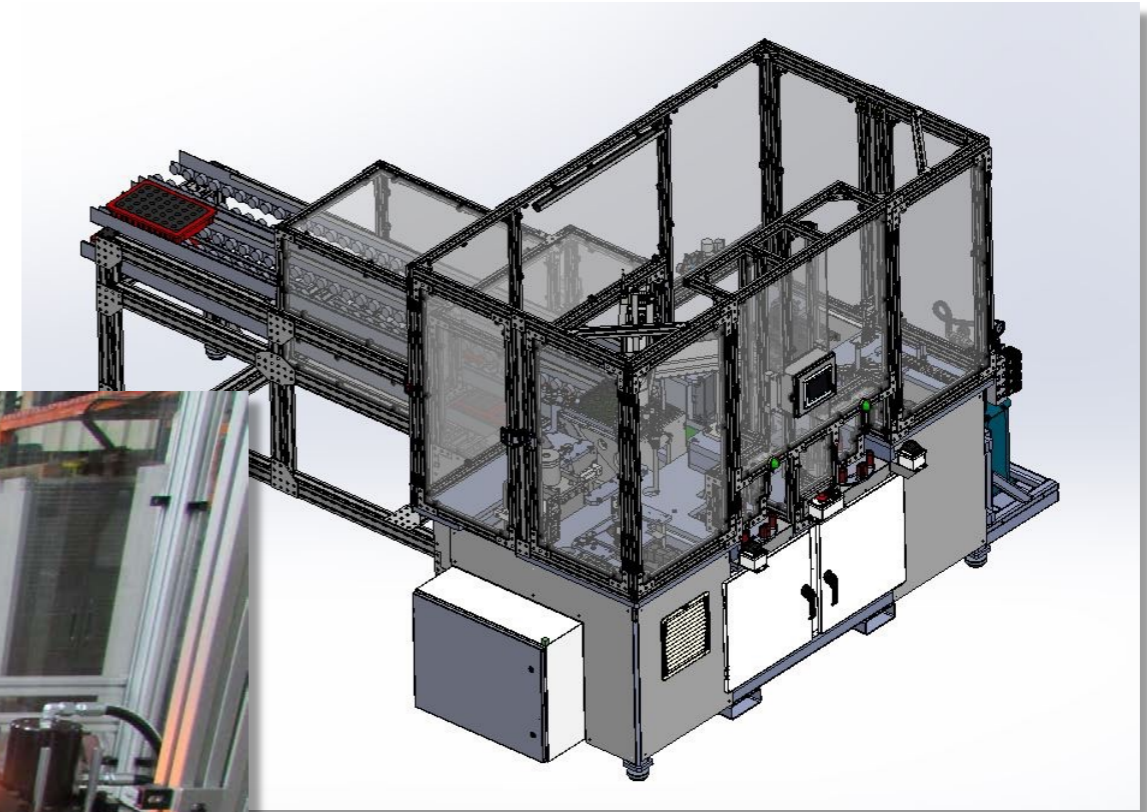


# 12-Station Rotary Dial for Connector Assembly





# Two-Station Processing and Pack-Out





# Fastener To Panel Assembly Cell





# Standardized Automation Stations



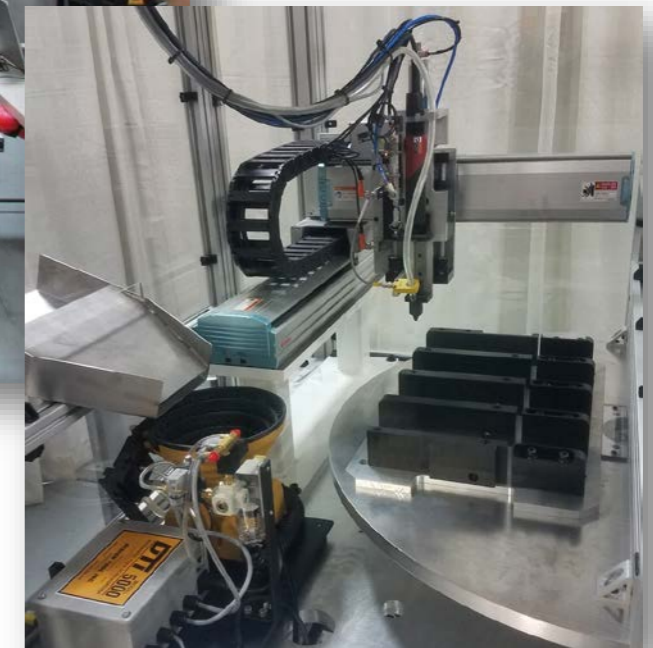
Clip Install



Presses

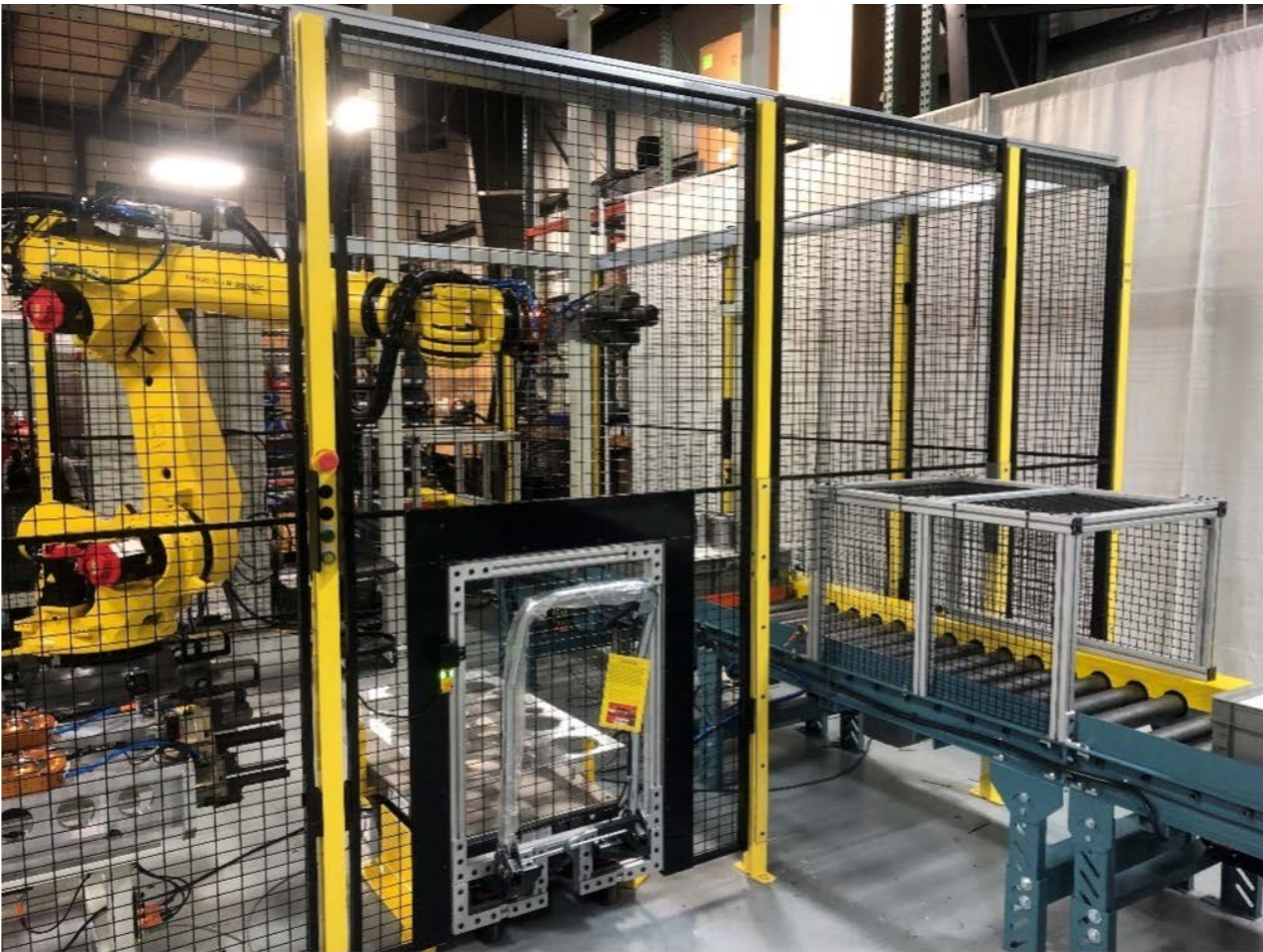
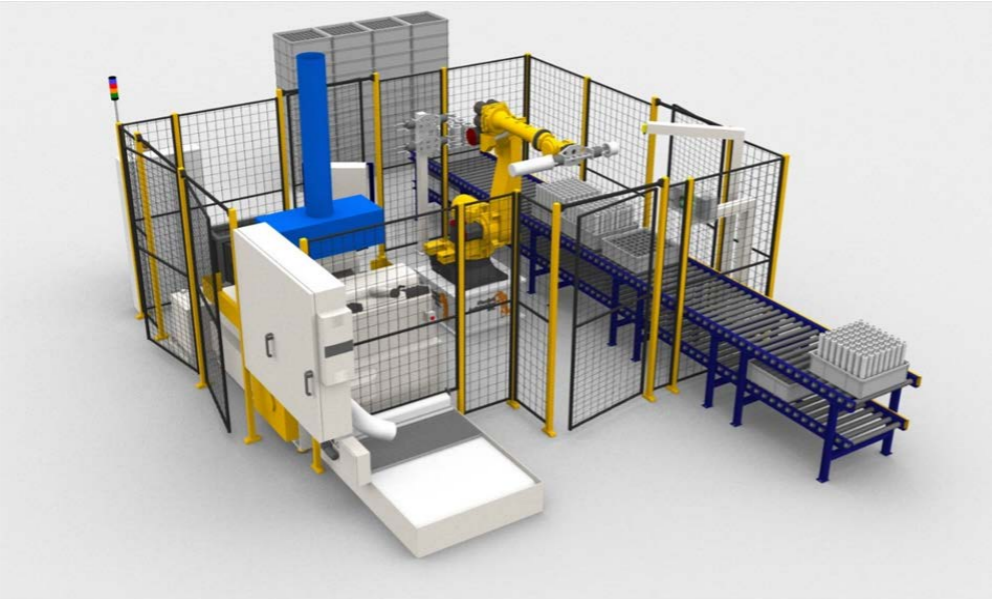


Screw Driving





# Pack-Out & Case Packing

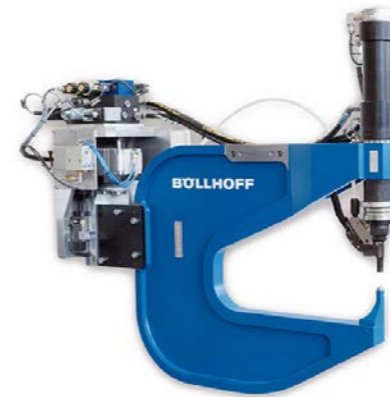




# Fastener Technology Integration



**ASSEMBLY AUTOMATION**  
AUTOMATIC SCREWDRIVING SYSTEMS



**GESIPA**<sup>®</sup>

**BeA**<sup>®</sup>



**WEBER**



**STANLEY**<sup>®</sup>  
Engineered Fastening



# FAI Clip Setter Product Line

Shorter takt times driven by higher capacity, faster reloads, and better position-ability.



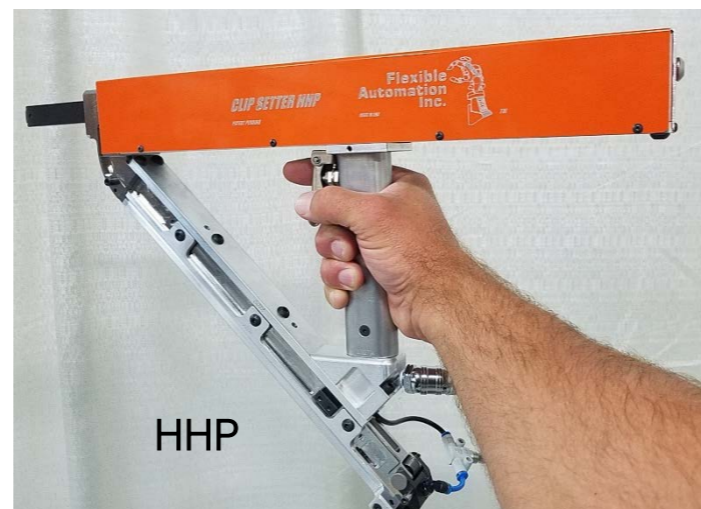
RHS



Speed-Dock Feeder



RLP



HHP

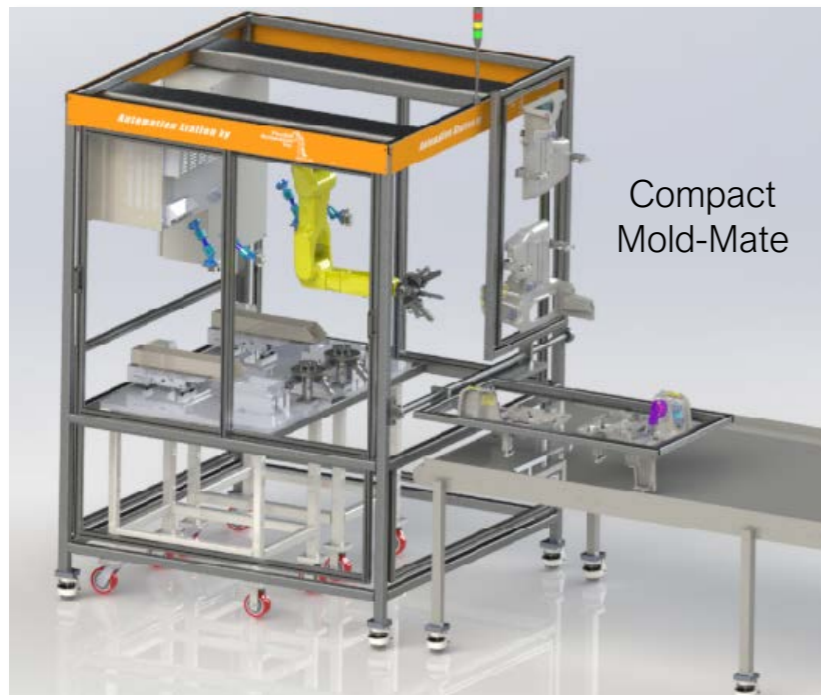


# Mold-Mate Product Line

Low cost and quick delivery on post-mold robotic assembly cells

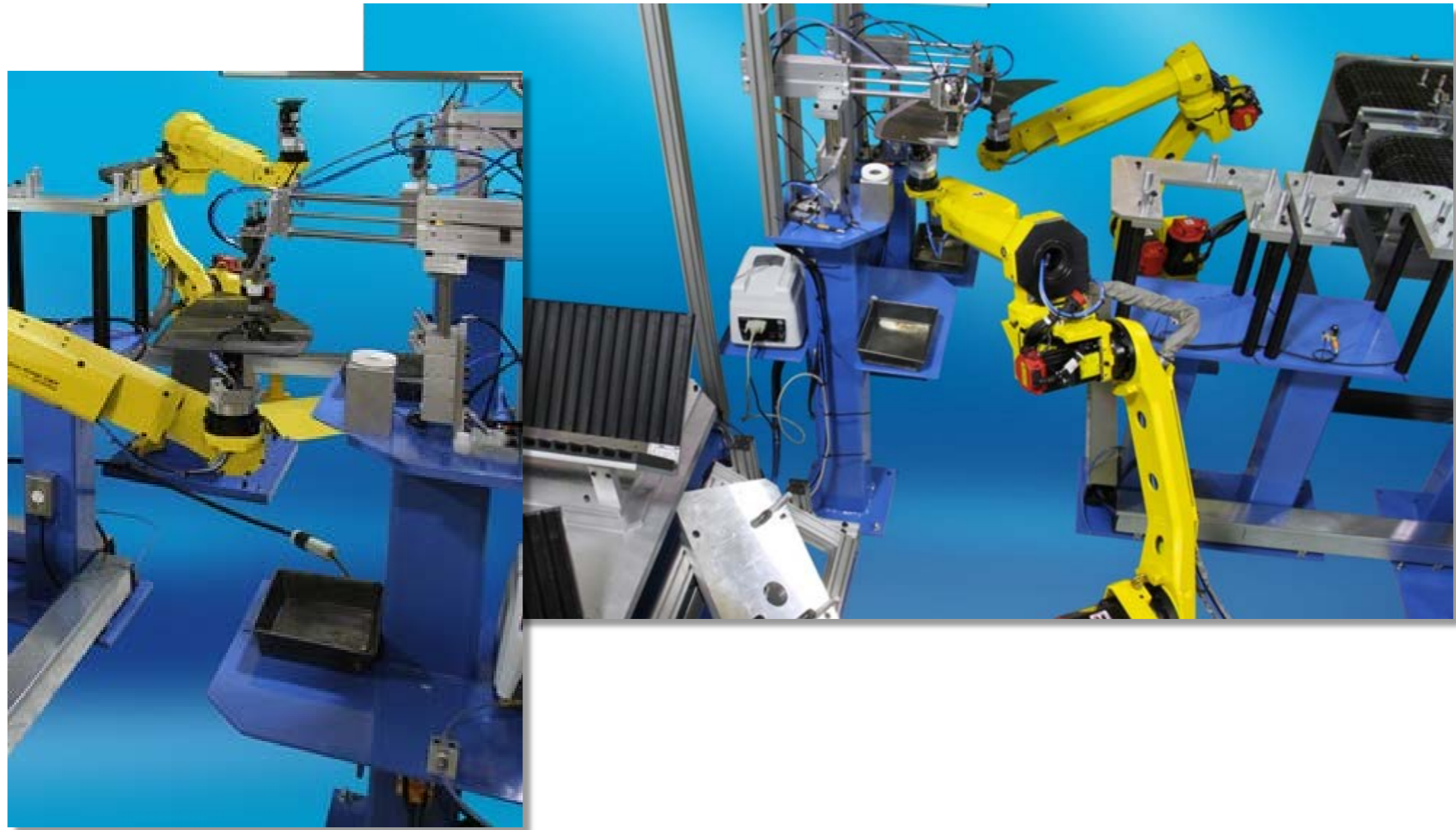


Wide and Narrow Models



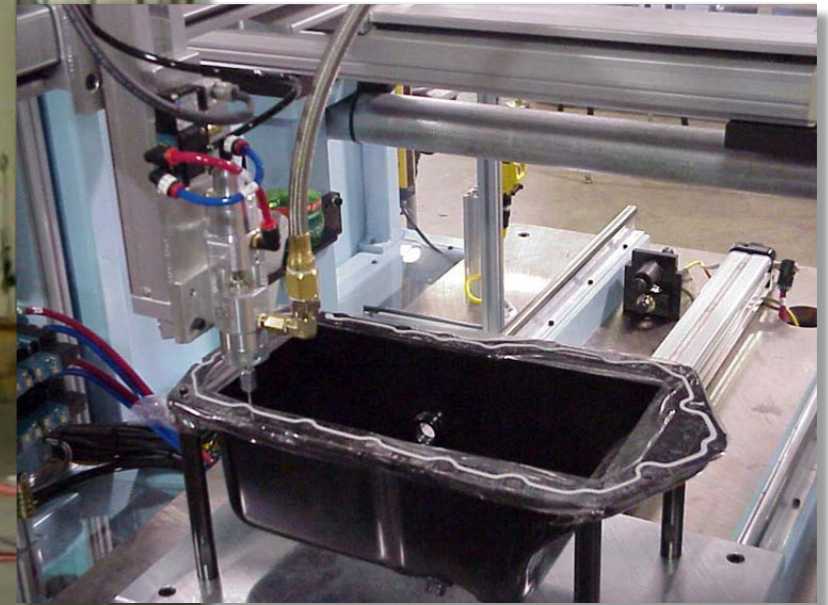


# Glass Primer Application





# Gasket Dispense: Dual Shuttle





# Gasket Dispense: Rotary Dial



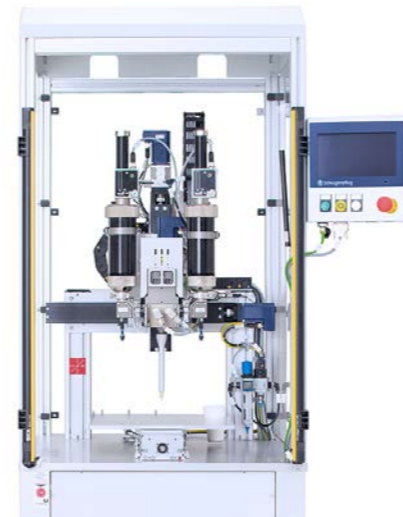


# Gasket Dispense & Plasmamatreat





# Dispense Technology Integration





# Standardized Robot Cells

Versatile, Low-Cost, Quick-Delivery





# Standardized Workstations

Versatile, Low-Cost, Quick-Delivery



Trunnion w/ Ergo Adjustment

Quick-Change Fixture Cart

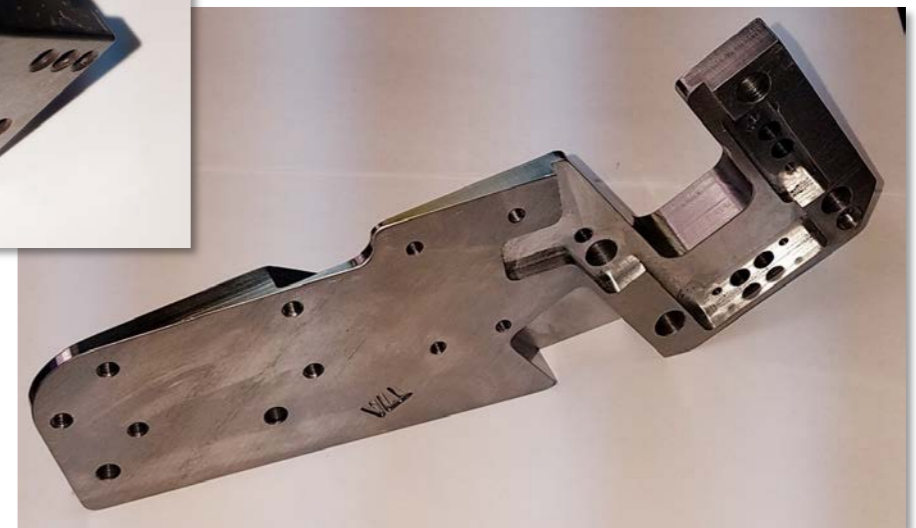
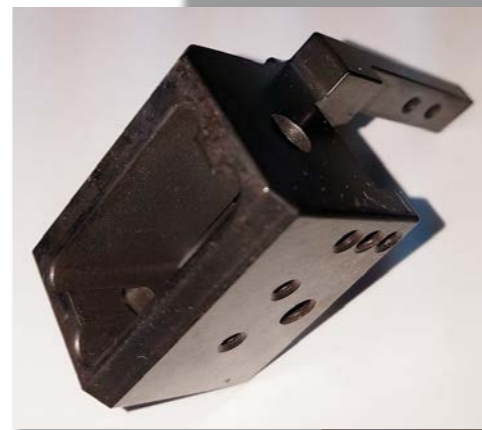


Simple Lean Station



# Machine To Print Services

- » Mastercam CAD/CAM 2D & 3D software
- » Vertical Machining Centers
  - » HAAS 4-Axis VF2 CNC
  - » HAAS TM 2P
  - » HAAS MiniMill CNC
- » Lathes
  - » Southwestern TRAK TR1630 SX
  - » Jet 1440-3PGH
  - » Hardinge DV59
- » ShopBot CNC 3D router
- » First article inspection services
- » Laser etched part numbers and 2D barcode





# Fabricate To Print Services

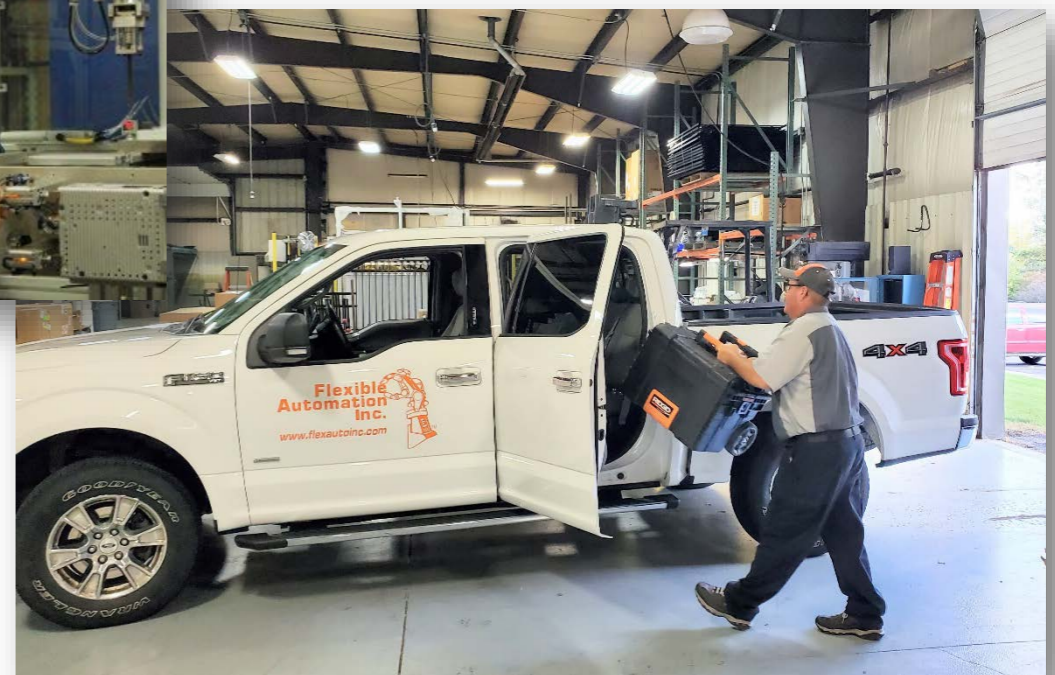
- » Automation-quality fabrications in short-order at competitive prices
  - Steel and aluminum bases and stanchions
  - Polycarbonate panels and shrouds
  - Sheet-metal guards, chutes, and enclosures
  
- » ShopBot PRS 3D router
- » Welding Equipment
  - Miller CP-302 MIG welder
  - Miller 252 MIG welder
  - Miller Syncrowave TIG welder
  - Lincoln Pro-cut 60 plasma cutter
- » Thomas SuperTRAD band saw
- » Scotchman CPO 350 chop saw
- » Famco Electric shear
- » Epoxy-spray and powder-coat painting





# Automation Controls Services

- » Affordable robot, PLC, and vision programming
- » Trouble-shooting, repair, cycle-time and quality improvements
- » Extremely talented staff, provided at competitive rates





# Highlights

Turn-key systems integrator since 1983

Fanuc Integrator for 25+ years

Epson Robotic's first integrator in U.S.A.

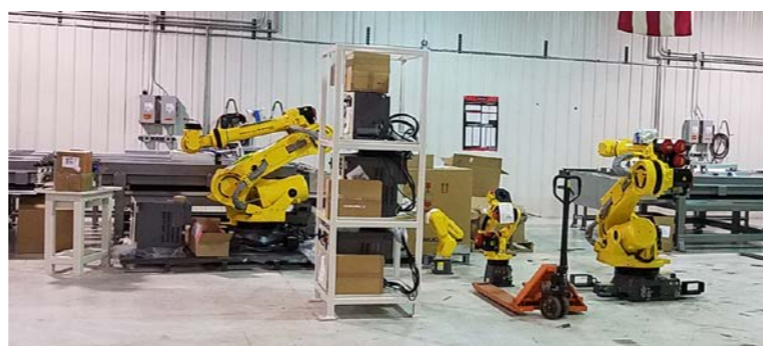
Decades of vision integration for many brands

Reputation for precise, complex assembly machines

Installations in Mexico, Germany, China, Hungary, Puerto Rico, and Canada

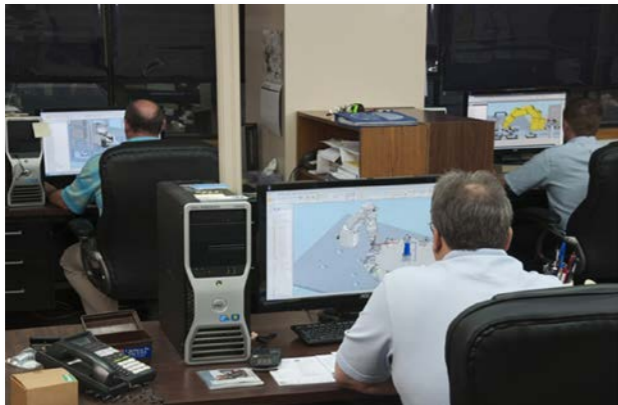
3 business units: Turn-Key Systems, Controls Services, and Tooling & Fabrications.

40,000 sqft facility w/ 4 high-bay bridge cranes





# In-House Production & Control



**In-House Engineering & Programming**



**In-House Panel Build**



**Skilled Mechatronic Assembly Department**



**Comprehensive Machine Shop**





# Advanced Manufacturing IT

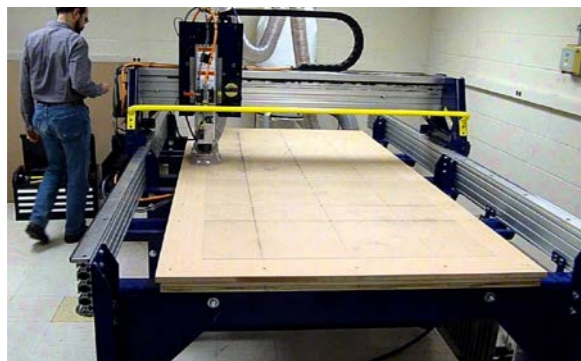


**EPICOR.**



**Mastercam.**

**ShopBot®**



ShopBot CNC Router



Cloud-based back-up to protect your order



Laser-marked components





# Diverse Industry Experience

» Industrial



» Consumer



» Automotive



» Medical Device





# Global Customers

**ASSA ABLOY**



**KUKA**





# Automation Partners





# Sales Contacts

---

**Service & Parts** – Nate Templeton, [ntempleton@flexautoinc.com](mailto:ntempleton@flexautoinc.com)

**Tooling & Fabrications** – Justin Chappell, [jchappell@flexautoinc.com](mailto:jchappell@flexautoinc.com)

**Systems Sales Engineer** – Bryan Baer, [bbaer@flexuatoinc.com](mailto:bbaer@flexuatoinc.com)

**Systems Sales Engineer** – Evan McMurray, [emcmurray@flexautoinc.com](mailto:emcmurray@flexautoinc.com)

**Systems Sales Engineer** – Rod Sturgis, [rsturgis@usprogroup.com](mailto:rsturgis@usprogroup.com)



Follow us on Twitter @FlexAutoInc



Follow us on LinkedIn

[www.flexautoinc.com](http://www.flexautoinc.com)

3387 E. Bristol Road  
Burton, MI 48529  
(810) 742-8540





# Mission Statement

---

Enable rewarding careers in advanced manufacturing for our customers and our employees.

# Vision Statement

---

Provide world-class fastening, dispense, and material handling automation around the globe.

# FAI Values

---

- » Action Oriented
- » Professionalism
- » Accountability
- » Team Player

