

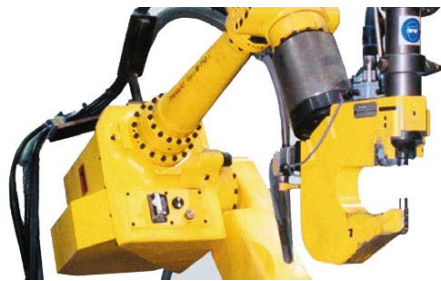
**Flexible
Automation
Inc.**



Company Overview

Automation Solutions

Robotic Fastening, Dispense and Material Handling



- » Screw Driving
- » Clip Setting
- » Clinching
- » Fasteners



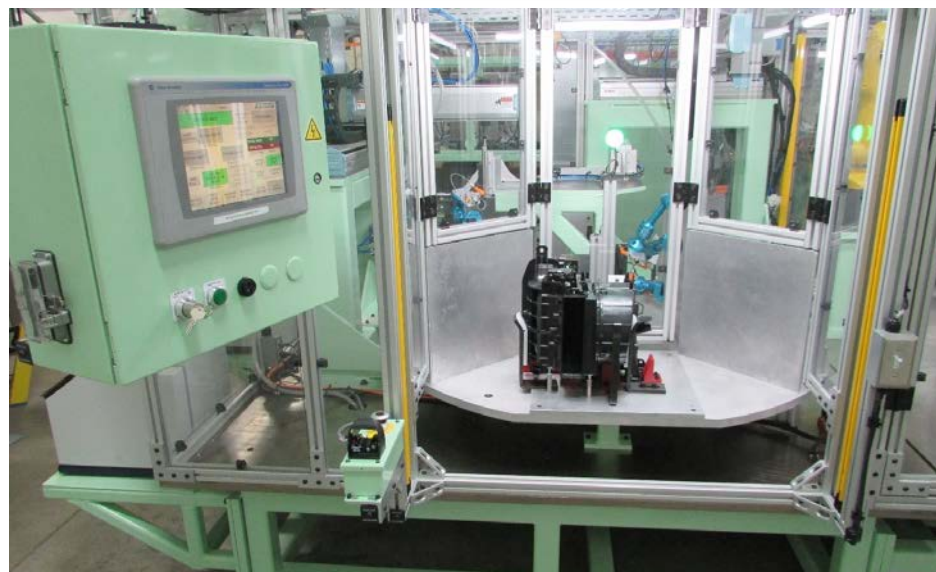
- » Form-In-Place Gaskets
- » Glass Primer Applications
- » Structural Bonding
- » Mold release application



- » Machine Tending
- » Case Packing
- » Palletizing
- » Sorting



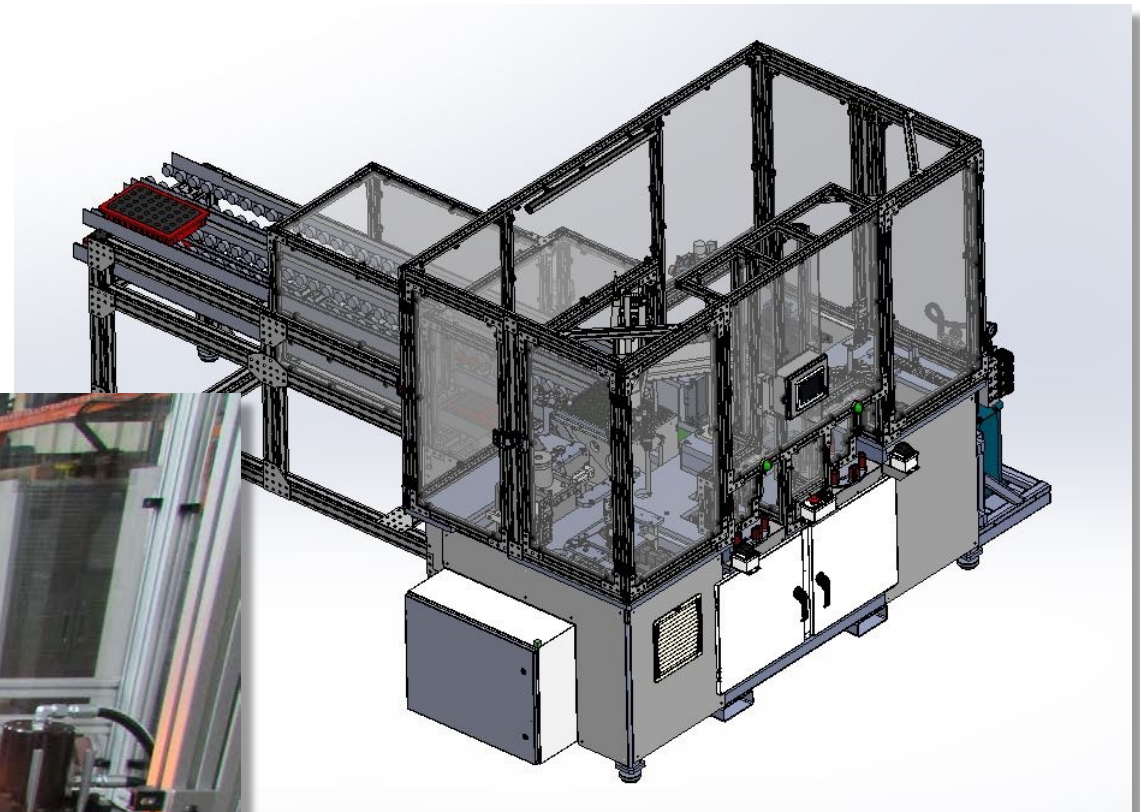
Three Rotary Index Dials (12 Stations)



12-Station Rotary Dial for Connector Assembly



Two-Station Processing and Pack-Out



Fastener To Panel Assembly Cell



Standardized Automation Stations



Clip Install

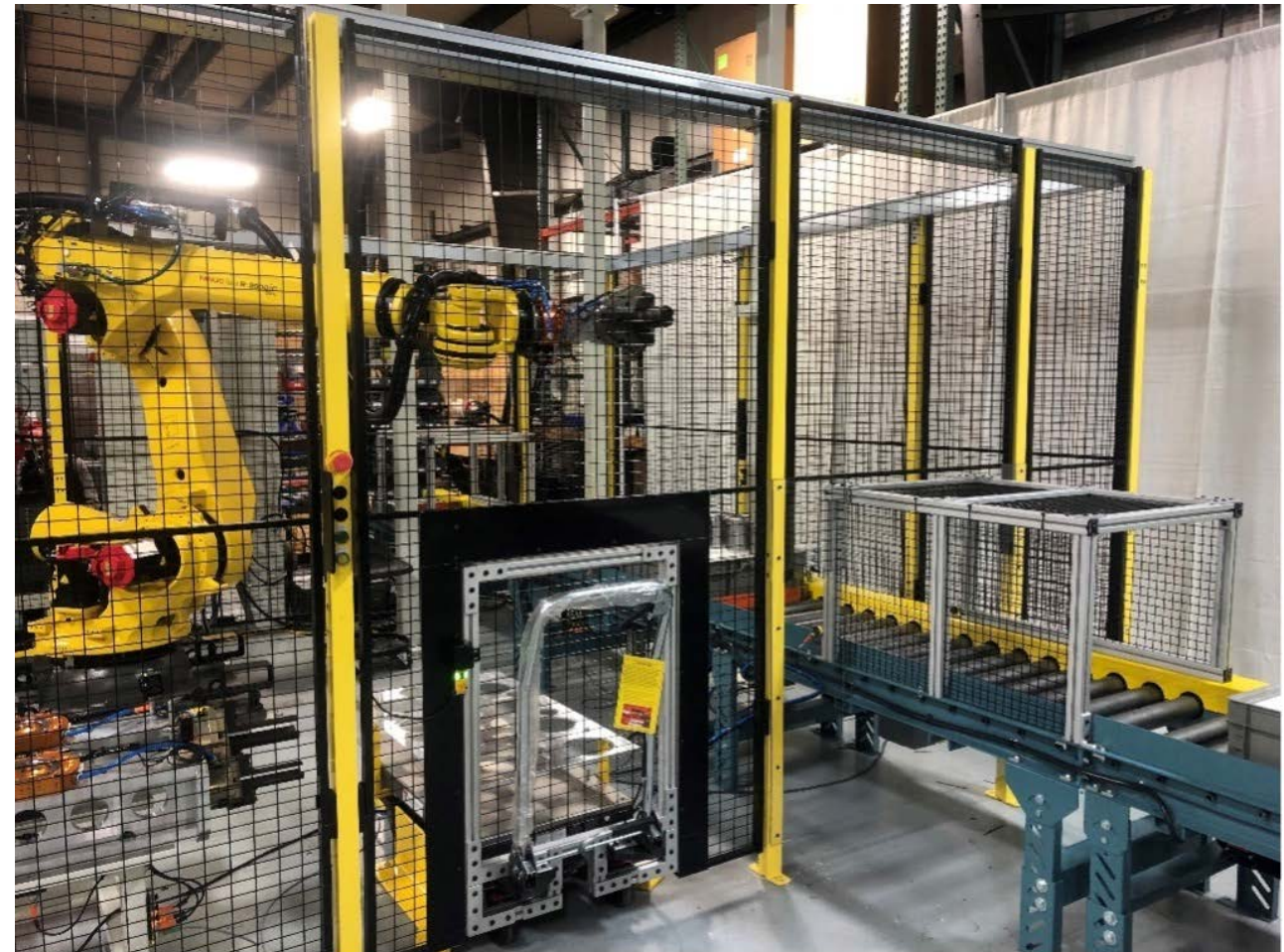
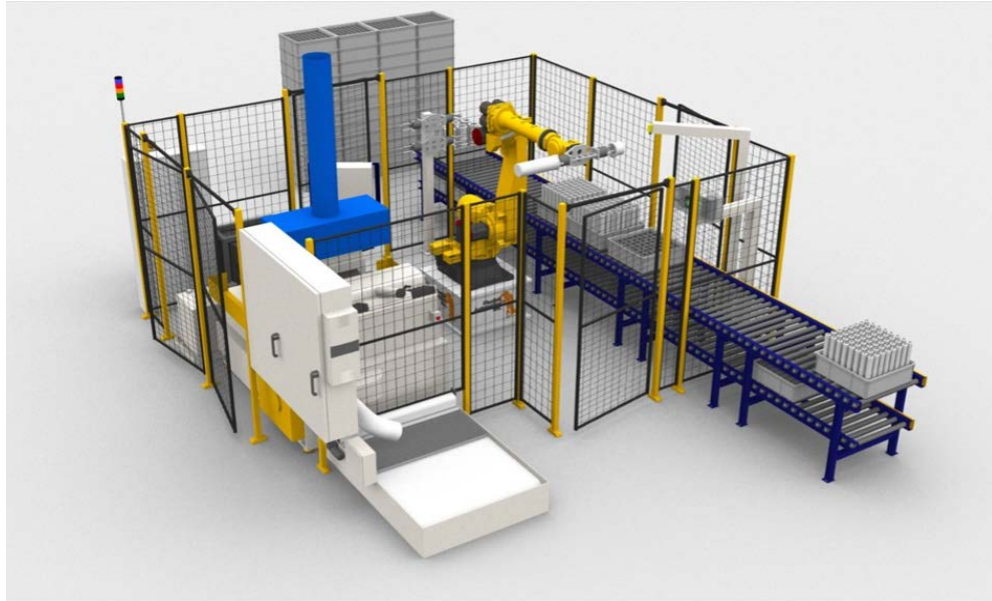


Presses



Screw Driving

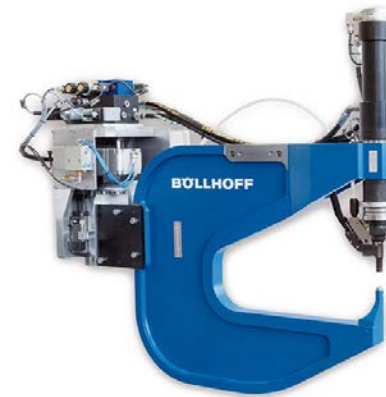
Pack-Out & Case Packing



Fastener Technology Integration



ASSEMBLY AUTOMATION®
AUTOMATIC SCREWDRIVING SYSTEMS



GESIPA®

BeA



WEBER



STANLEY®
Engineered Fastening

**Flexible
Automation
Inc.**



FAI Clip Setter Product Line

Shorter takt times driven by higher capacity, faster reloads, and better position-ability.



RHS



Speed-Dock Feeder



HHP

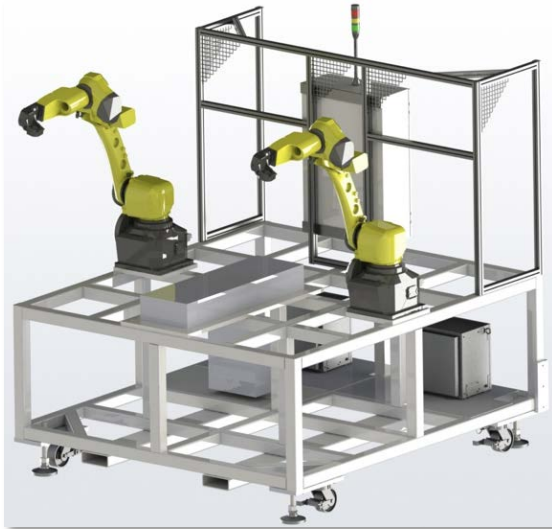


RLP



Mold-Mate Product Line

Low cost and quick delivery on post-mold robotic assembly cells



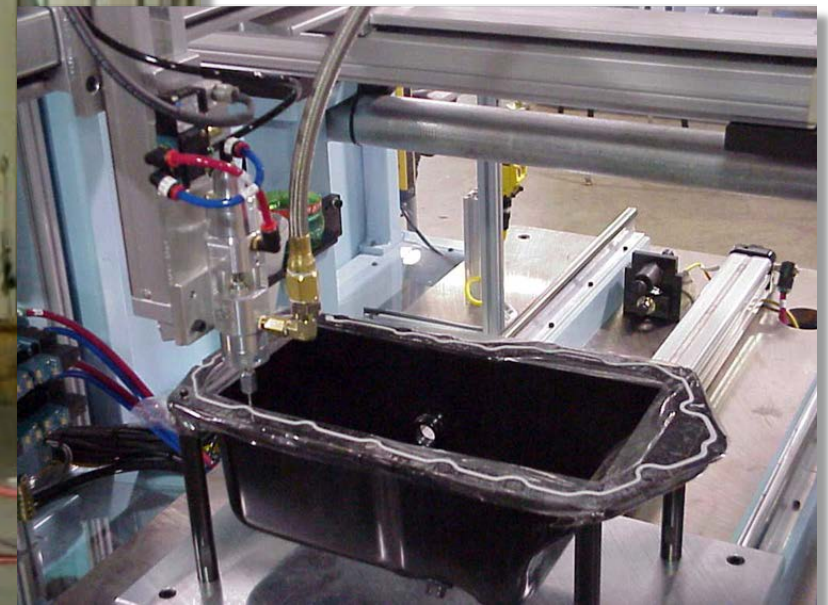
Wide and Narrow Models



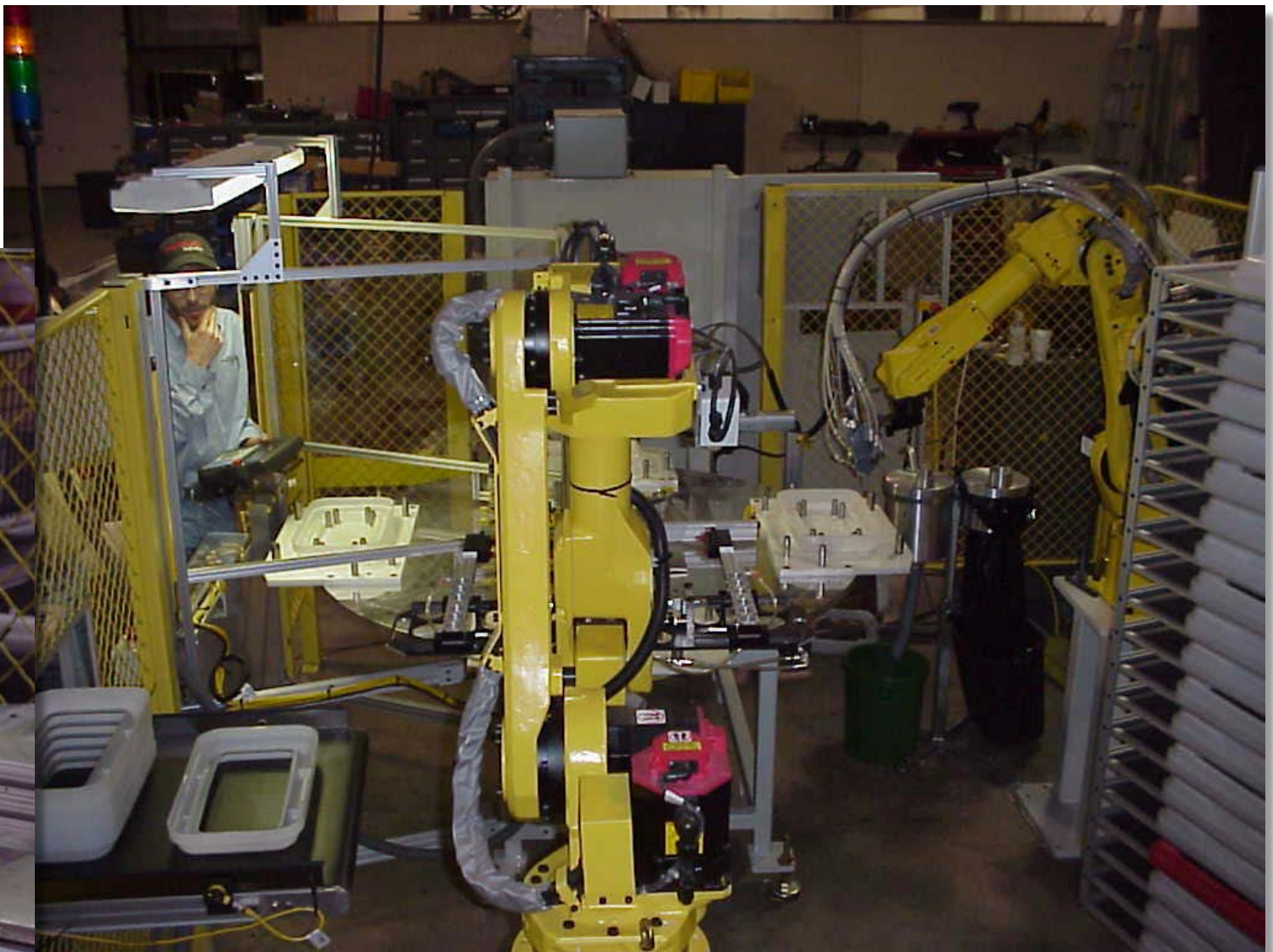
Glass Primer Application



Gasket Dispense: Dual Shuttle



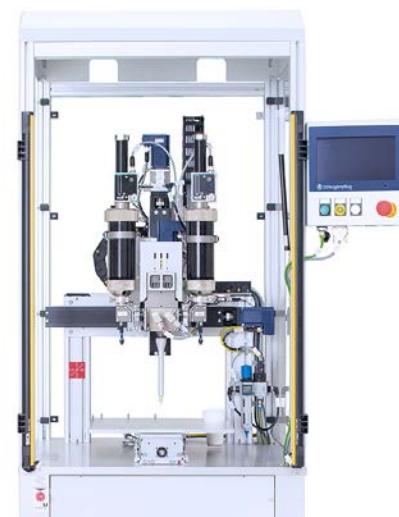
Gasket Dispense: Rotary Dial



Gasket Dispense & Plasmamatreat



Dispense Technology Integration



Standardized Robot Cells

Versatile, Low-Cost, Quick-Delivery



Standardized Workstations

Versatile, Low-Cost, Quick-Delivery



Trunnion w/ Ergo Adjustment

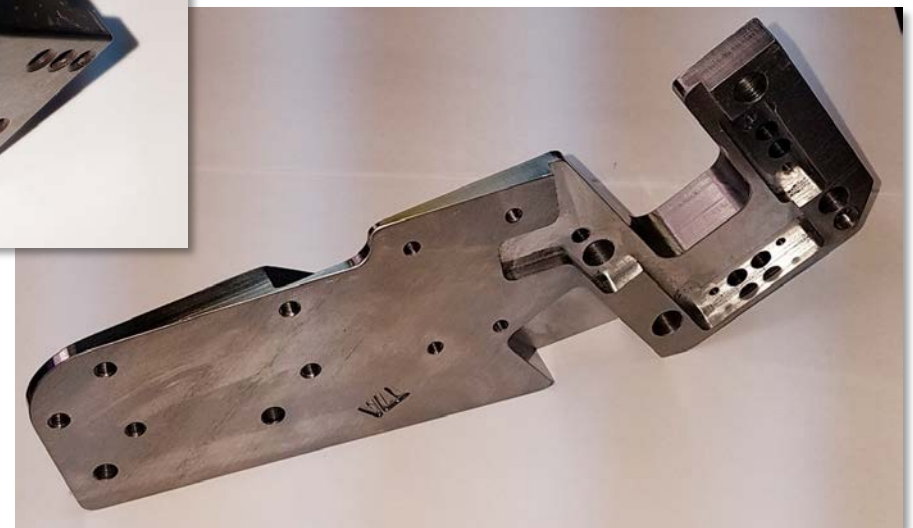
Quick-Change
Fixture Cart



Simple
Lean Station

Machine To Print Services

- » Mastercam CAD/CAM 2D & 3D software
- » Vertical Machining Centers
 - » HAAS 4-Axis VF2 CNC
 - » HAAS TM 2P
 - » HAAS MiniMill CNC
- » Lathes
 - » Southwestern TRAK TR1630 SX
 - » Jet 1440-3PGH
 - » Hardinge DV59
- » ShopBot CNC 3D router
- » First article inspection services
- » Laser etched part numbers and 2D barcode



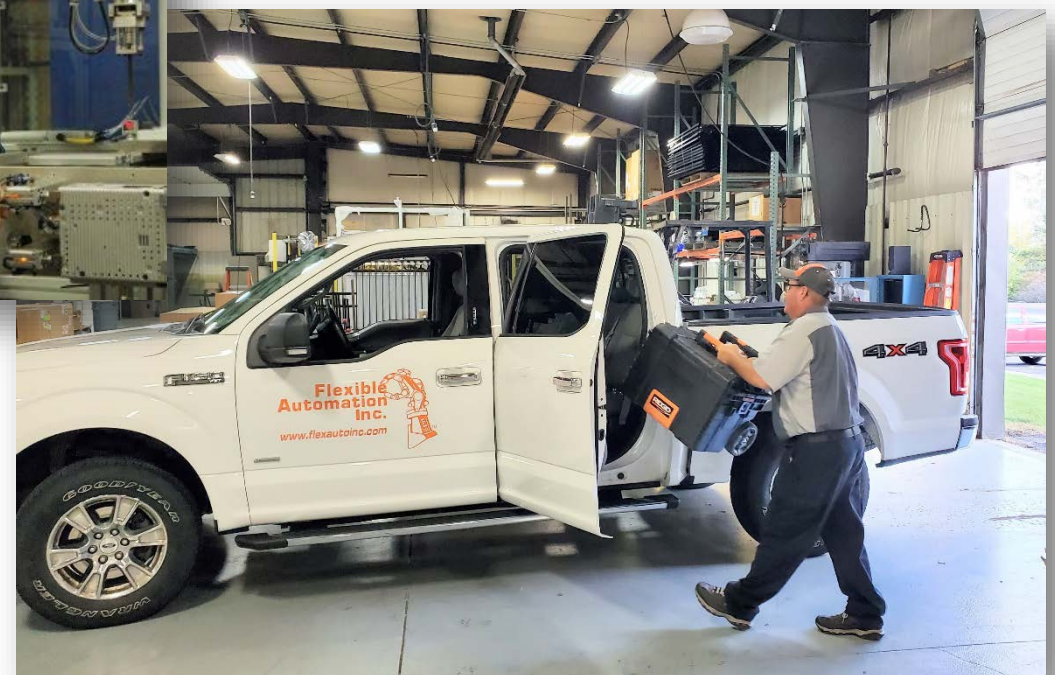
Fabricate To Print Services

- » Automation-quality fabrications in short-order at competitive prices
 - Steel and aluminum bases and stanchions
 - Polycarbonate panels and shrouds
 - Sheet-metal guards, chutes, and enclosures
- » ShopBot PRS 3D router
- » Welding Equipment
 - Miller CP-302 MIG welder
 - Miller 252 MIG welder
 - Miller Syncrowave TIG welder
 - Lincoln Pro-cut 60 plasma cutter
- » Thomas SuperTRAD band saw
- » Scotchman CPO 350 chop saw
- » Famco Electric shear
- » Epoxy-spray and powder-coat painting



Automation Controls Services

- » Affordable robot, PLC, and vision programming
- » Trouble-shooting, repair, cycle-time and quality improvements
- » Extremely talented staff, provided at competitive rates



Highlights

Turn-key systems integrator since 1983

Fanuc Integrator for 25+ years

Epson Robotic's first integrator in U.S.A.

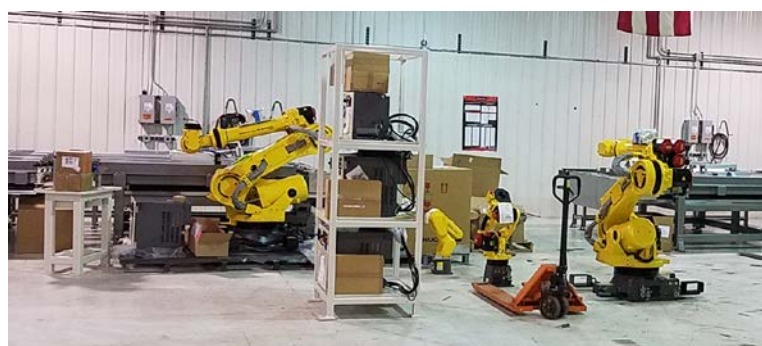
Decades of vision integration for many brands

Reputation for precise, complex assembly machines

Installations in Mexico, Germany, China, Hungary, Puerto Rico, and Canada

3 business units: Turn-Key Systems, Controls Services, and Tooling & Fabrications.

40,000 sqft facility w/ 4 high-bay bridge cranes



In-House Production & Control



In-House Engineering & Programming



In-House Panel Build



Skilled Mechatronic Assembly Department



Comprehensive Machine Shop



Advanced Manufacturing IT



ShopBot®



ShopBot CNC Router



Cloud-based back-up to protect your order

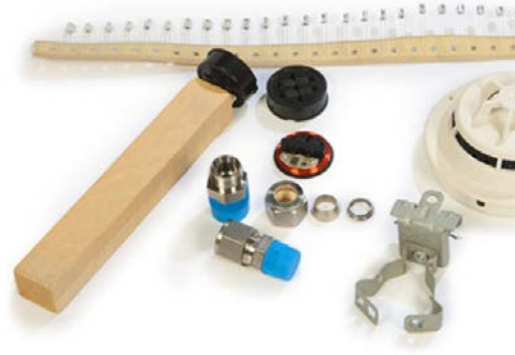


Laser-marked components



Diverse Industry Experience

» Industrial



» Consumer



» Automotive



» Medical Device



Global Customers

ASSA ABLOY



KUKA



Automation Partners



Sales Contacts

Service – Nate Templeton, ntempleton@flexautoinc.com

Parts, Tooling & Fabrications – Justin Chappell, jchappell@flexautoinc.com

Systems Sales Engineer – Bryan Baer, bbaer@flexuatoinc.com

Systems Sales Engineer – Evan McMurray, emcmurray@flexautoinc.com

Systems Sales Engineer – Rod Sturgis, rsturgis@usprogroup.com



Follow us on Twitter @FlexAutoInc



Follow us on LinkedIn

www.flexautoinc.com

6202 S. State Rd.
Goodrich, MI 48438
(810) 742-8540



Mission Statement

Enable rewarding careers in advanced manufacturing for our customers and our employees.

Vision Statement

Provide world-class fastening, dispense, and material handling automation around the globe.

FAI Values

- » Action Oriented
- » Accountability
- » Professionalism
- » Team Player

